

SIEMENS



The worldwide
standard for
home and build-
ing control



Touch sensors glass – stylish and high-quality design covers

Attractive and easy to use for highly sophisticated requirements

Timeless design

The square glass design covers are impressive with their high-quality genuine material in black and white. Frameless with a chrome ring the touch sensors glass blend harmoniously into any room setting. Activate intuitively basic room functions and preset room scenes at the slight touch of the touch areas.

Convenient operation

The touch areas are surrounded by an illuminated ring that is used to indicate status or as orientation lighting, and can be set in seven different colors: white, yellow, red, magenta, cyan, green and blue.

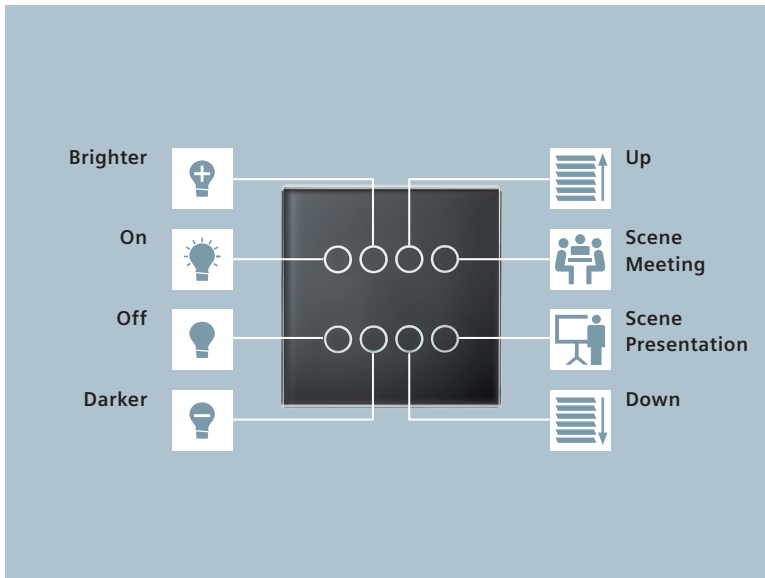
When approaching the touch sensor, the brightness of the illuminated rings intensifies. This ensures an orientation in the dark and perfect handling.

Optimal range of functions

Due to the well-known application program, the project planning and commissioning is very efficient. All functions such as switching, dimming, solar protection and scene control are parameterized as commonly known. The touch sensors are harmonized with the existing bus coupling concept from Siemens, which guarantees a modular approach with bus coupling and flush mounting actuators.

Highlights

- Stylish and frameless design covers made out of genuine glass
- Optical guidance with luminous rings around touch areas and a proximity sensor
- Efficient planning and commissioning via a standard application program
- Activate preset room scenes at the touch of one button



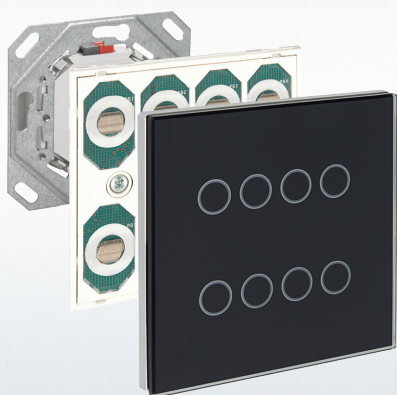
Elegant room control for different disciplines

High-quality design – combined with sensitive touch operation

The representative design of these touch sensors is qualified for an upscale room setup, e.g. for conference rooms, hotels, representative office buildings or enhanced residential areas. The touch sensors glass in the colors white and black match to the frame program DELTA miro glass from Siemens, so the switches, sockets and operation units give the room a harmonious appearance.

Ambience via press of a touch area

A touch sensor glass controls the basic functions in a room. At the touch of a button of each touch sensor variant, a complete scene is activated. For example, a conference room can be set to presentation mode within seconds: The blinds close, the room lighting is dimmed, the screen is let down and the beamer switches on.



Technical structure of touch sensors glass

The design cover with touch sensor unit is placed on the bus coupling unit. This means that the touch sensors glass base on the uniform concept of bus coupling concept.



Overview of all important data

Specifications



Touch sensors glass UP 211, UP 212, UP 213

- Consist of touch sensor unit and touch sensor cover
- Sensitive pair of touch areas for vertical operation
- Round, transparent ring per touch area with RGB LED backlighting
- Glass cover with chrome ring
- Proximity sensor
- For plugging onto a bus coupling unit or a flush mounting actuator with bus transceiver module (BTM)
- Selectable functions per touch area:
 - Switching
 - Dimming
 - Solar protection control
 - Scene control
 - Transmitting values
 - Forced control
- Scene function module with eight scene channels

Selection and ordering data

Type	Version	DT	Article no.	Price per PU	PU	PG/P unit	PG	Weight per PU (kg)
UP 211/11	Touch sensor cover, single, white	A	5WG1 211-8DB11		1	1	A20	0.105
UP 211/21	Touch sensor cover, single, black	A	5WG1 211-8DB21		1	1	A20	0.105
UP 212/11	Touch sensor cover, double, white	A	5WG1 212-8DB11		1	1	A20	0.105
UP 212/21	Touch sensor cover, double, black	A	5WG1 212-8DB21		1	1	A20	0.105
UP 213/11	Touch sensor cover, quadruple, white	A	5WG1 213-8DB11		1	1	A20	0.105
UP 213/21	Touch sensor cover, quadruple, black	A	5WG1 213-8DB21		1	1	A20	0.105
UP 211/01	Touch sensor unit, single	A	5WG1 211-2DB01		1	1	A20	0.035
UP 212/01	Touch sensor unit, double	A	5WG1 212-2DB01		1	1	A20	0.035
UP 213/01	Touch sensor unit, quadruple	A	5WG1 213-2DB01		1	1	A20	0.035
Accessories								
UP 117/12	Bus coupling unit	A	5WG1 117-2AB12		1	1	A21	0.045

Siemens Switzerland Ltd
Building Technologies Division
International Headquarters
Gubelstraße 22
6301 Zug
Switzerland
Tel. +41 41 724 24 24

Siemens Building Technologies
Brunel House
Sir William Siemens Square, Frimley
Camberley
Surrey, GU16 8QD
United Kingdom
Tel +44 1276 696000

Siemens Ltd
Building Technologies Division
22/F, AIA Kowloon Tower, Landmark East
100 How Ming Street
Kwun Tong, Hong Kong
Tel +852 2870 7888

The information in this document contains general descriptions of technical options available, which do not always have to be present in individual cases. The required features should therefore be specified in each individual case at the time of closing the contract. The document contains a general product overview. Availability can vary by country. For detailed product information, please contact the company office or authorized partners.

© Siemens Switzerland Ltd, 2016 • Order no. E1003-C38-5B-A0040-7600

Our world is undergoing changes that force us to think in new ways: demographic change, urbanization, global warming and resource shortages. Maximum efficiency has top priority – and not only where energy is concerned. In addition, we need to increase comfort for the well-being of users. Also, our need for safety and security is constantly growing. For our customers, success is defined by how well they manage these challenges. Siemens has the answers.

“We are the trusted technology partner for energy-efficient, safe and secure buildings and infrastructure.”